



## 10 Bambury Avenue Summerland Point NSW

5 🛏 4 🚗 2 🚗

Embrace a rare opportunity to acquire this extraordinary absolute waterfront residence, elegantly positioned on a sprawling 1,334 sqm north-facing property. This exquisite residence features a private jetty, boathouse, and your very own boat ramp, making it an ideal retreat for the discerning buyer.

The main residence boasts breathtaking water views from the master suite, complete with a luxurious spa and an oversized walk-in robe. With the option of a second bedroom or study, the layout offers versatility to suit your needs. An expansive deck invites relaxation and entertaining, while the adjoining kitchen, living, and dining areas are meticulously designed for both style and

**Type** : House  
**Price** : \$ 3,900,000  
**Land Size** : 1334 sqm  
**View** : <https://www.3realty.com.au/sale/nsw/central-coast-region/summerland-point/residential/house/8121674>

[For full version visit the website](#)



**Joel De Shannon**  
1300 848 332

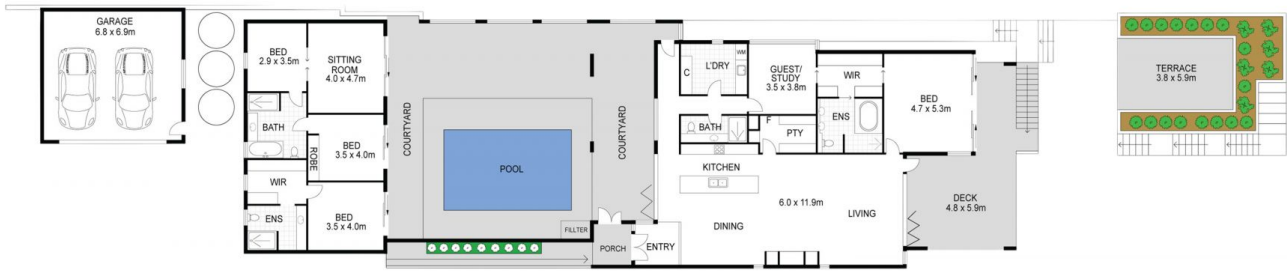


**Alicia Taylor**  
1300 848 332

# 10 Bambury Avenue, SUMMERLAND POINT



## COURTYARD HOUSE



The floorplan is for general guidance only and not to scale. Measurements and layouts are approximate and may vary. Please conduct your own inspections and measurements to verify accuracy.

**3REALTY**