



305 Old Pacific Highway Swansea NSW

5 🛏 2 🚿 1 🚗

Introducing an exceptional real estate opportunity that combines convenience and promising returns - a dual-home property on a single title, tailor-made for the astute investor.

The primary residence, recently revitalized, stands as a testament to quality construction. Featuring three inviting bedrooms, a contemporary kitchen, and a brand-new bathroom, this home currently has fantastic tenants. The polished floorboards contribute a sense of warmth, while the newly laid driveway ensures convenient parking for residents.

Adjacent to this, the secondary dwelling takes the form of a practical and modern granny flat. Comprising two well-proportioned bedrooms, a functional kitchen, and an

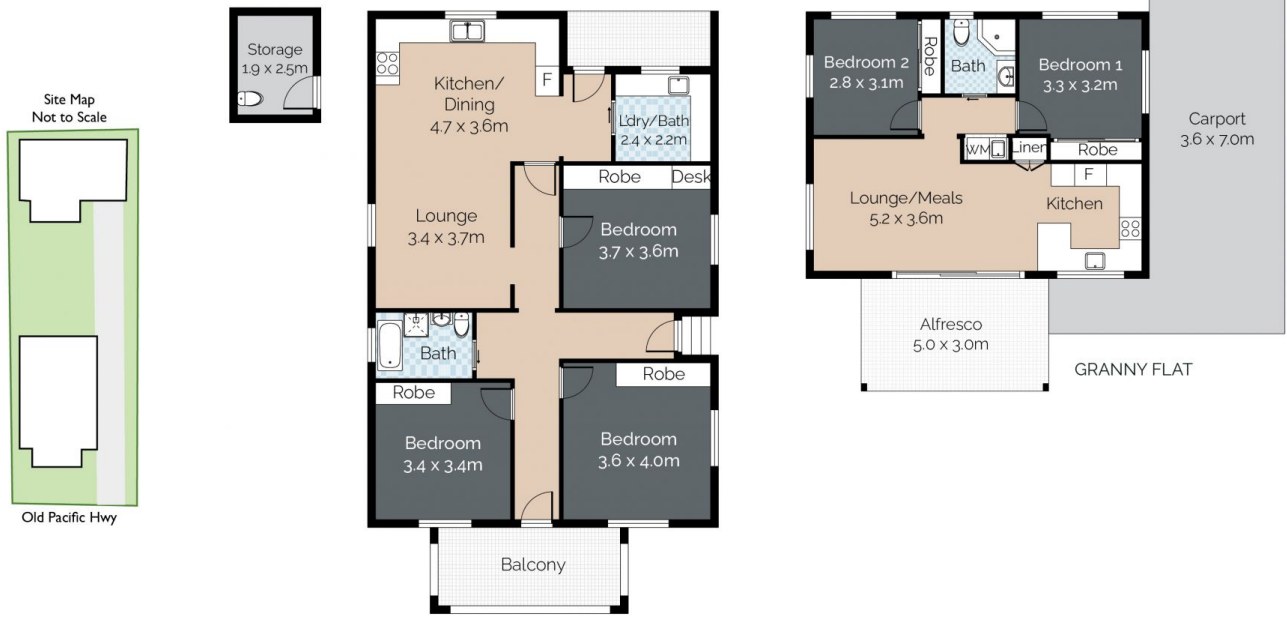
Price : \$ 1,170,000
Land Size : 696 sqm
View : <https://www.3realty.com.au/sale/nsw/lake-macquarie-east/swansea/residential/house/7779978>



Alicia Taylor
1300 848 332



Bella Hooey
1300 848 332



305 Old Pacific Highway, Swansea

*Not to scale. Floor plan for illustration purposes only, measurements are approximate and some deviations may occur.

