



1 Mornington Circuit Gwandalan NSW

4 2 2

Welcome to Lakeside, a hidden gem of a neighbourhood located in the peaceful coastal suburb of Gwandalan.

This modern and single-level entertainer, built in 2017, is situated on a corner block, and offers a comfortable and convenient lifestyle. Positioned perfectly on a stunning coastal peninsula, Lakeside provides easy access to Lake Macquarie, the largest saltwater lake in the southern hemisphere.

Take a stroll down to the waterfront or spend a fun family day on the water, swimming, fishing, or sailing. Hike through the national park to take in all the natural beauty - all of this is possible from the convenience of this family-friendly coastal neighbourhood.

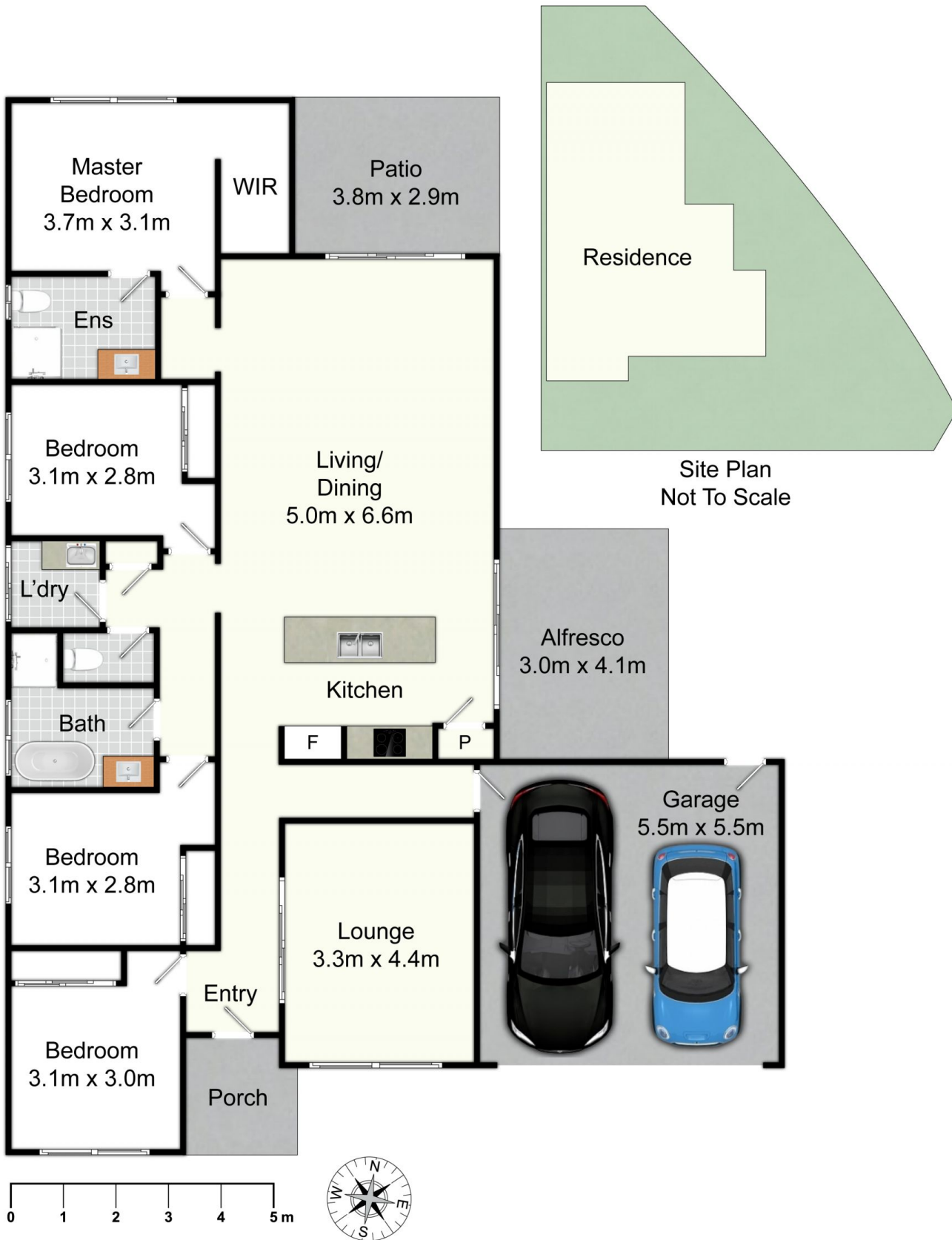
Price : \$ 880,000

Land Size : 602 sqm

View : <https://www.3realty.com.au/sale/nsw/central-coast-region/gwandalan/residential/house/7545910>



Joel De Shannon
1300 848 332



1 Mornington Cct, Gwandalan

All information contained herein is gathered from sources we deem reliable. However, we cannot guarantee its accuracy and act as a messenger only in passing on the details. Interested parties should rely on their own inquiries and the contract for sale. The floor plans are artist's impressions only. The site plan is not to scale.

