



305a Old Pacific Highway Swansea NSW

2 1 1

You could be the very first people to live in this brand new home!

Just completed this 2 bedroom home has been finished beautifully. Brand new with timber look flooring throughout the home feels light and airy. The kitchen is spacious boasting Caesar stone benchtops, Moroccan style tiled splashback and plenty of cupboard and bench space.

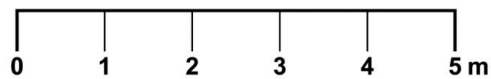
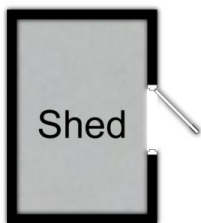
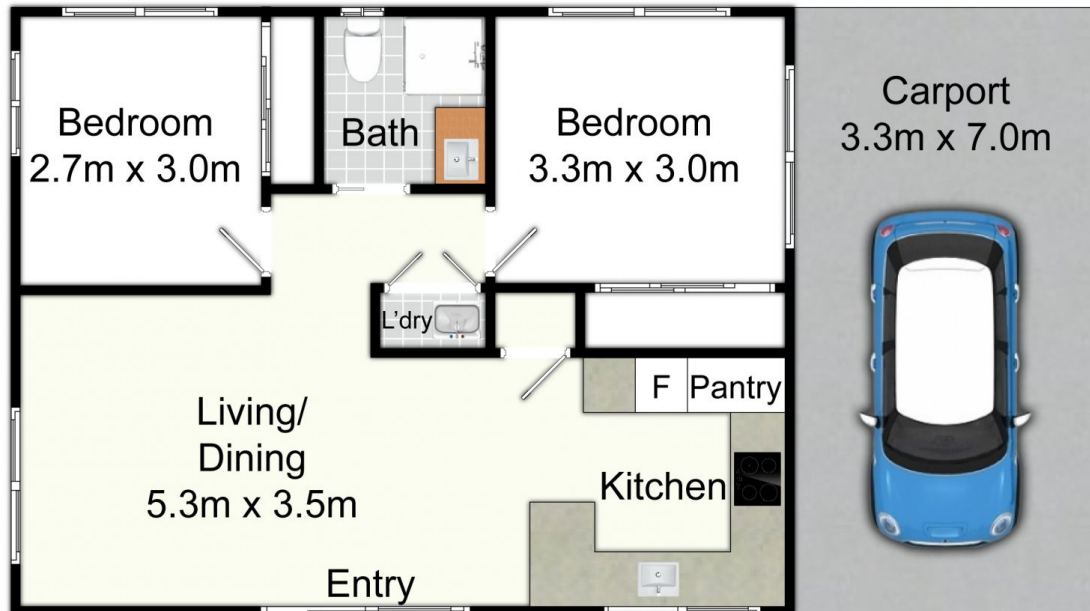
The double sized bedrooms are well appointed with lovely carpet, built in wardrobes and fans. The bathroom is gorgeous with high quality tiles, timber vanity and good sized shower.

With a good sized carport and grassed area at the front of the home, this is a great property, close to the lake.

View : <https://www.3realty.com.au/lease/nsw/lake-macquarie-east/swansea/residential/house/7131605>



Sarah Young Fenton
1300 848 332



305a Old Pacific Highway, Swansea

All information contained herein is gathered from sources we deem reliable. However, we cannot guarantee its accuracy and act as a messenger only in passing on the details. Interested parties should rely on their own inquiries and the contract for sale. The floor plans are artist's impressions only. The site plan is not to scale.

