



6A Sonoma Road Budgewoi NSW

2 1 1

Near new 2 bedroom home ideally located next to Woodland Parkway Reserve and a 10 minute walk to Budgewoi shops via the cycle path.

The property features open plan kitchen dining and lounge room, two spacious bedrooms both with built in wardrobes, air conditioning and low maintenance gardens. Off street parking for 1 car.

Ideally suited for a long term tenant.

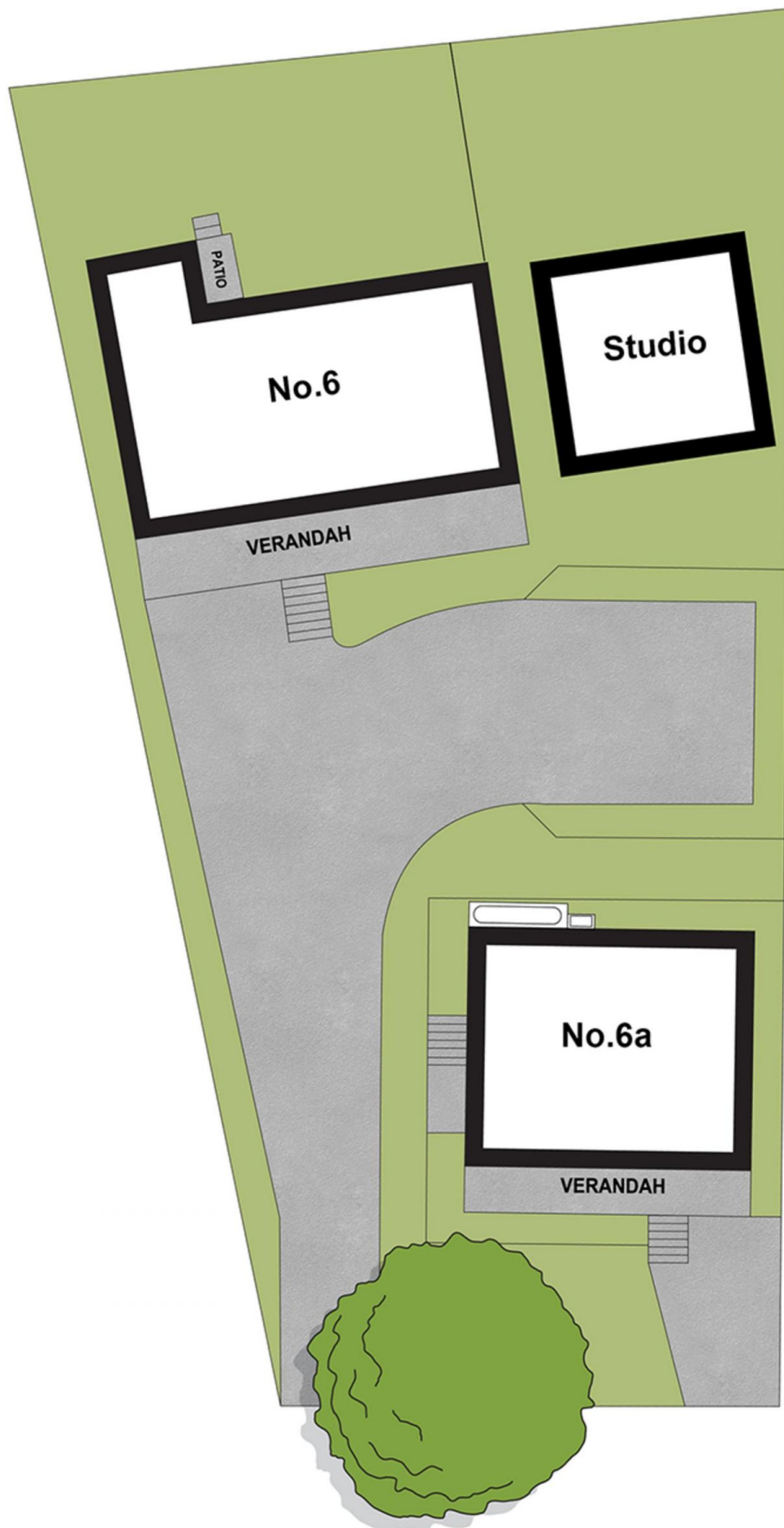
Inspection is necessary before applying.

* Please note that this property is directly managed by the landlord *

View : <https://www.3realty.com.au/lease/nsw/central-coast-region/budgewoi/residential/house/6008594>



Walter Reinhard
1300 848 332



SONOMA RD