



311/2 - 4 Bishopgate Street Wickham NSW

1 1 1

Introducing Stella, the newest residential development in the heart of Newcastle's thriving WestEnd. Offering a mix of 1, 2 and 3 bedroom apartments with many boasting some of the best uninterrupted views of Newcastle Harbour and the city.

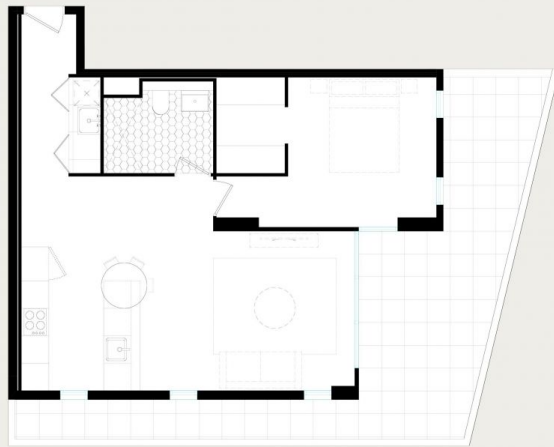
Stella on Hannell features modern, open plan designs with spacious outdoor areas and access to a stunning rooftop garden.




Building Size : 84 sqm
View : <https://www.3realty.com.au/sale/nsw/newcastle-region/wickham/residential/apartment/6008573>



Joel De Shannon
 1300 848 332

311 / 11
UNIT & STREET NUMBER



-  1
-  1
-  1

Internal 58 m²
External 26 m²
Total 84 m²

VARIATION TO CONTRACT
IF APPLICABLE

