



N506/2 - 4 Bishopgate Street Wickham NSW

2 🛏 2 🚿 1 🚗

Introducing Stella, the newest residential development in the heart of Newcastle's thriving WestEnd. Offering a mix of 1, 2 and 3 bedroom apartments with many boasting some of the best uninterrupted views of Newcastle Harbour and the city.

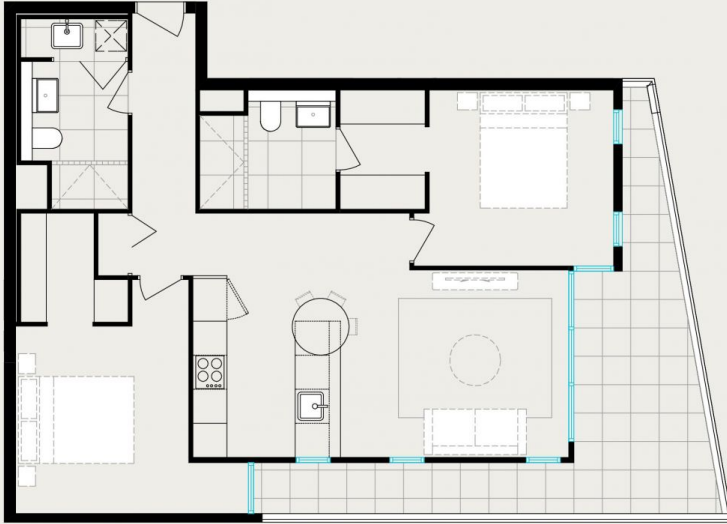
Stella on Hannell features modern, open plan designs with spacious outdoor areas and access to a stunning rooftop garden.

Price : \$ 735,500
Building Size : 91 sqm
View : <https://www.3realty.com.au/sale/nsw/newcastle-region/wickham/residential/apartment/6008570>



Joel De Shannon
1300 848 332

N506



Internal 74m² External 17m² Total 91m²

