



71 Clydebank Road Buttaba NSW

4 2 2

Centrally positioned on a 542 square metre block, this home is just a 5 minute stroll to Australia's largest saltwater lake and a short 8 minute drive to the train station (Sydney -Newcastle line)

This comfortable home features a large multipurpose kitchen with stunning bamboo timber floorboards, a dedicated entry foyer that leads onto an open plan lounge and formal dining area. These features coupled with a private main bedroom with ensuite, makes this home a great place for a family or anyone who enjoys entertaining. Lock up garage with automatic door and the additional car parking options at the front and rear of the property make a perfect space to keep your car, caravan or boat.

Features include:

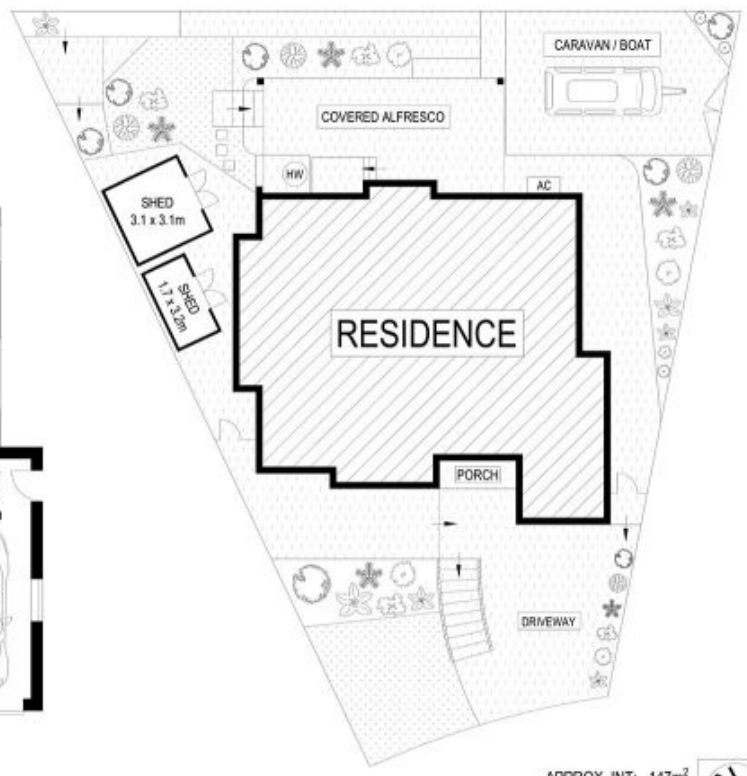
- Well maintained and meticulously presented 4 bedroom home

Land Size : 542 sqm

View : <https://www.3realty.com.au/sale/nsw/lake-macquarie-west/buttaba/residential/house/6008521>



Walter Reinhard
1300 848 332



SITE PLAN (NOT TO SCALE)

APPROX. INT: 147m²
 APPROX. EXT: 380m²
 LAND: 540m²



Scale in metres. Indicative only. Dimensions are approximate. All information contained herein is gathered from sources we believe to be reliable. However we cannot guarantee its accuracy and interested persons should rely on their own enquiries.

71 Clydebank Road, Buttaba